

MLC
Rental & Sales



Aerial Work Platforms



Forklifts



Cranes for rent



Spider lifts

MLC INC CO., TLD

Head Office: 17th Floor, Icon4 Building, 243A De La Thanh Street, Dong Da Dist, Hanoi.

Southern Branch: No. 15, T16 Str, The Manhattan Area, Long Binh Ward, Thu Duc City, HCM

Tel: +84 24 3773 3704/ 3703

Hotline: 0833 486 586

Email: info@mlc-inc.com.vn

Tax code: 0102625233

Web: www.mlc-inc.com.vn – www.dailyxenangnguoivn.com – www.xenangnguoijlg.vn

MLC
Rental & Sales



PROFILE COMPANY
2025

TABLE OF CONTENTS

03 | Overview

04 | Key Milestones

05 | Corporate Culture

06 | Organizational Structure

07 | Products & Services

Industry Applications **08** |

Dingli Aerial Work Platforms **09** |

Spider lifts **10** |

Factory Equipment **12** |

14 | Rental Equipment

20 | Notable Domestic Projects

24 | Notable International Projects

26 | Strategic Partners

27 | Contact us

OVERVIEW

MLC provides sales and rental of heavy lifting equipment, with roots in Japan. It inherits technology, experience, and operations from U-MAC Vietnam, a 100% Japanese-owned company with over 15 years in the industry. MLC is now a leading supplier in Vietnam, contributing to key sectors like construction, industry, agriculture, and aviation.

GOAL

MLC not only focuses on the company's overall growth but also continuously improves individual skills and responsibility to deliver the best service to customers. We constantly seek reputable suppliers of the most advanced products worldwide to offer (for sale and rent) to our clients. Provide equipment, services, and safe, high-quality, and efficient solutions.

To become a leading and reputable provider of lifting and construction equipment – the trusted choice for contractors and investors.

VISION



MISSION



Delivering reliable, high-quality lifting and construction equipment, services, and solutions.

KEY MILESTONES

2000

Opened a representative office in Vietnam.
Started researching the Vietnamese market.

2010

Shifted business focus to lifting equipment.
Started rental service for aerial work platforms.

T2/2014

Opened a machinery warehouse in Nghi Son, Thanh Hoa.
- Became the main equipment supplier for Nghi Son Refinery projects.

2015

Became the authorized dealer of JLG (USA) aerial work platforms in Vietnam.

2017

Became the authorized dealer of Dingli aerial work platforms.

2022

Established Da Nang branch.
- Opened an office in Hai Chau District, Da Nang City.

2024

Relocated the branch from Binh Duong to Ho Chi Minh City.

2007

Established U-MAC Vietnam Co., Ltd.
Main business: Rental of earthmoving equipment.

2012

Expanded business scope: Sales and rental of aerial work platforms, cranes, forklifts, generators, light towers, etc.

T5/2014

Established Ho Chi Minh City branch.
- Opened office and warehouse in District 9, HCMC.

2016

Opened warehouse and service center in Phu My, Vung Tau.

2019

Opened a warehouse in Long Son, Vung Tau:
- Supplied equipment for the Long Son Petrochemical Project.
- Provided equipment for nearby projects in Vung Tau.

2023

Opened a warehouse in Long Thanh, Dong Nai.

2025

Established MLC INC Co., Ltd.

CORPORATE CULTURE

HOU-REN-SO & PDCA

REPORTING

When encountering a problem, immediately report it to the nearest leader (department head or team leader). The report should briefly describe the current situation, the status of the issue, and the solution being implemented: How is it being handled, and how far has it gone... If there are multiple possible solutions, report them so that higher-level managers can choose the best one, and the whole team will follow that direction.

COMMUNICATION

Maintain regular communication and information sharing with other team members so they can stay updated on the situation and contribute ideas to solve the problem or to help build a better plan.

DISCUSSION

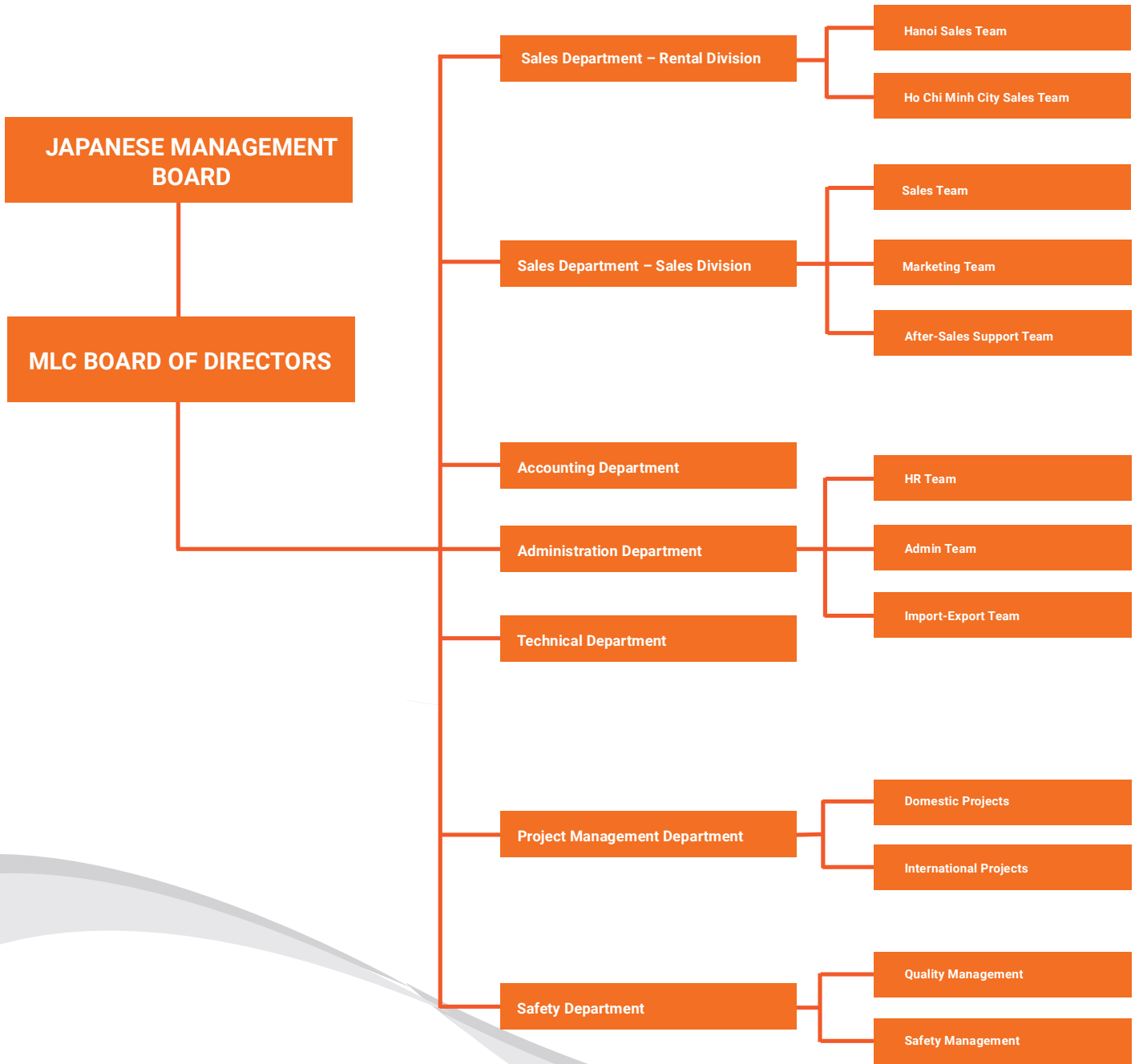
Once the situation has been reported and communication with relevant members has taken place, but the issue still cannot be resolved, then a meeting will be held. Everyone will discuss and find the best solution to the problem.



5S MODEL



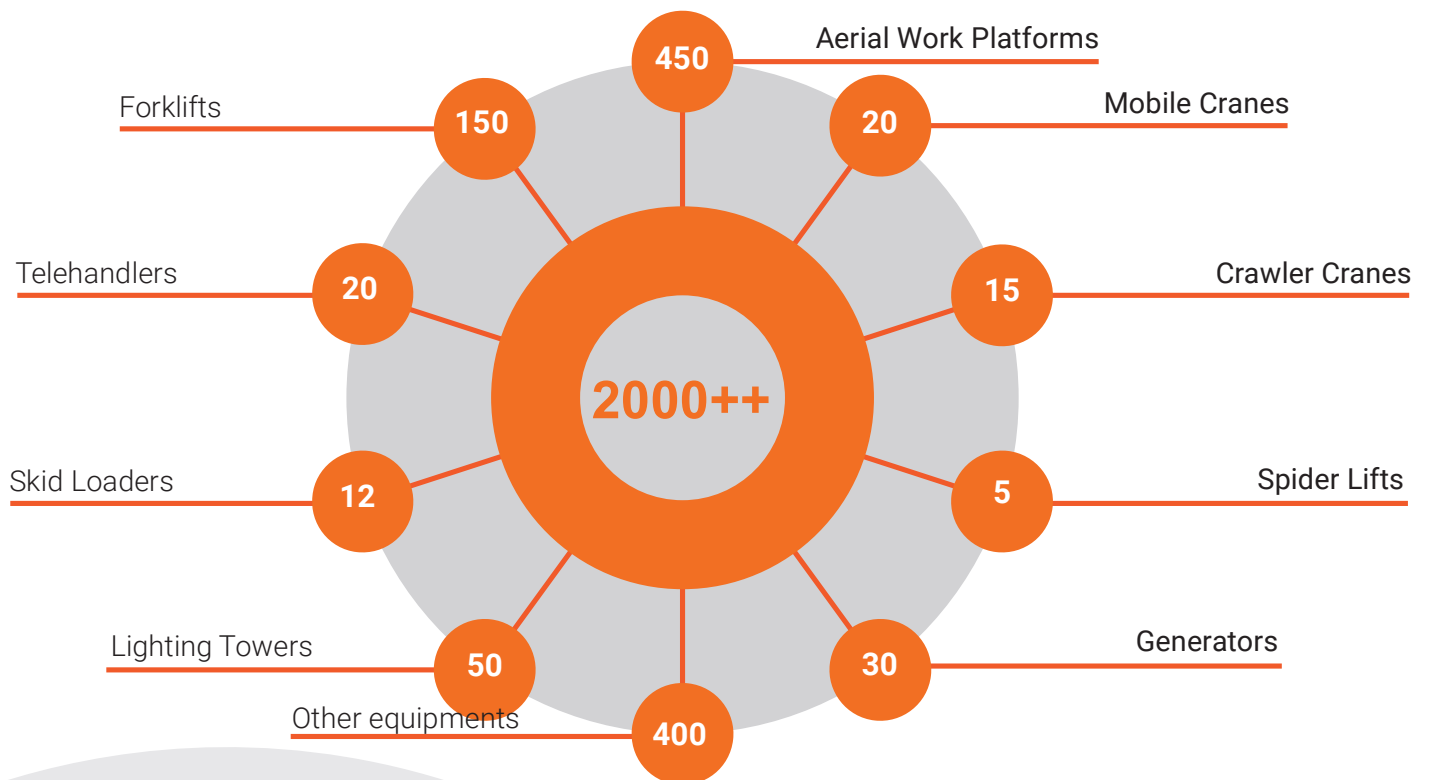
ORGANIZATIONAL STRUCTURE



NUMBER OF EMPLOYEES

BOARD OF DIRECTOR	3	Sales & Marketing	25	Warehouse Management	8
		Administration	10	Technicians	50
		Accounting	14	Project Management	10
		Safety	6	Operators/Drivers	70

PRODUCTS AND SERVICES



SALES

- Sales of new equipment
- Sales of used equipment
- Sales of genuine spare parts

- Short-term rental
- Long-term rental

RENTALS

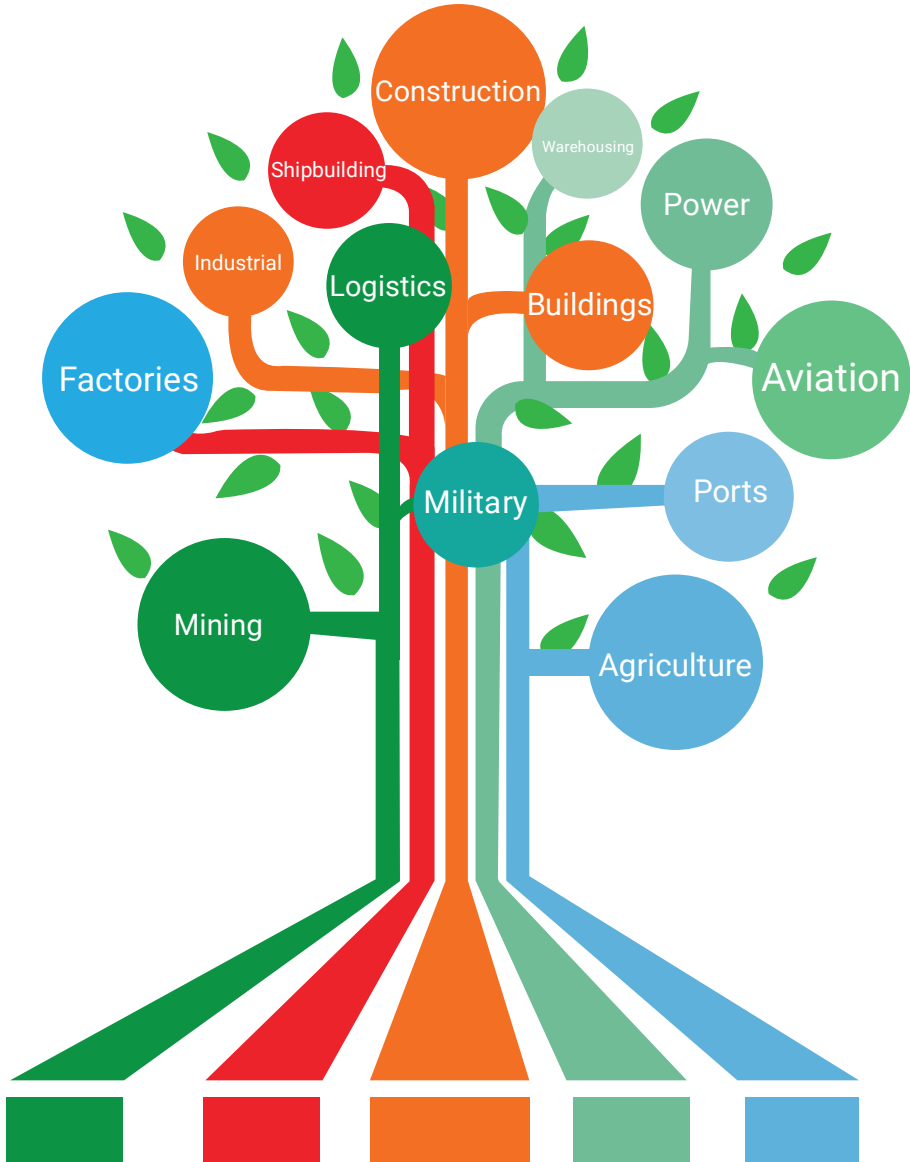
TECHNICAL SERVICES

- Repair services upon request
- Maintenance and service packages

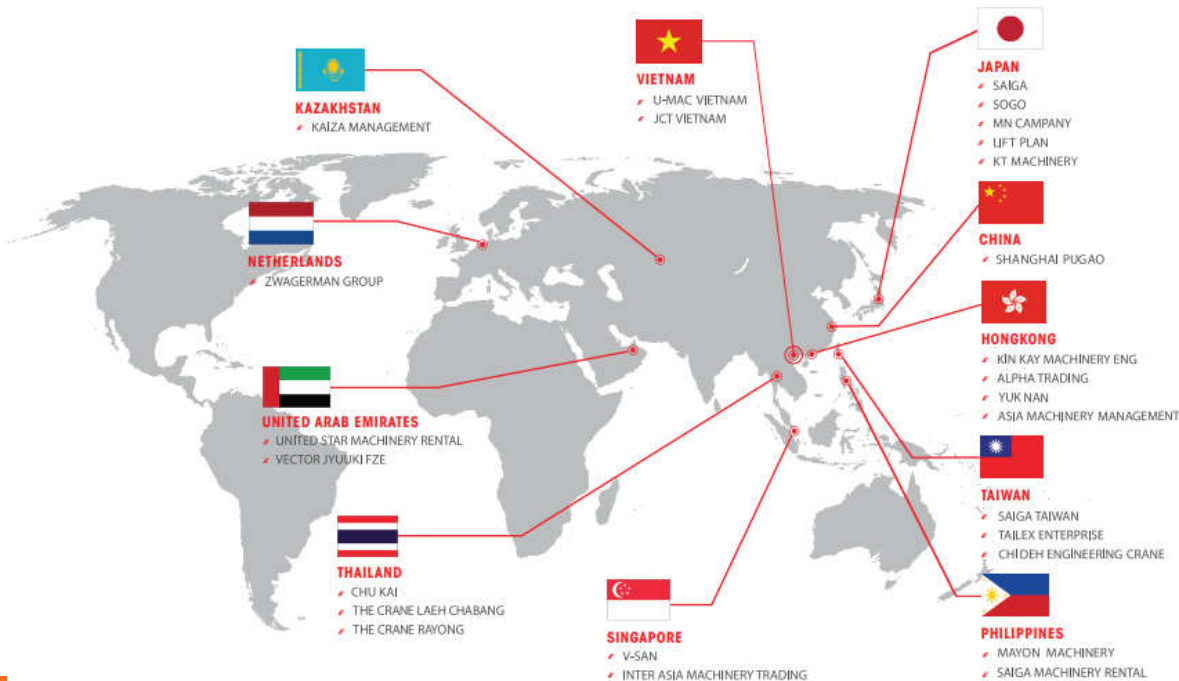
- Equipment operation safety
- Lifting safety instruction

SAFETY TRAINING

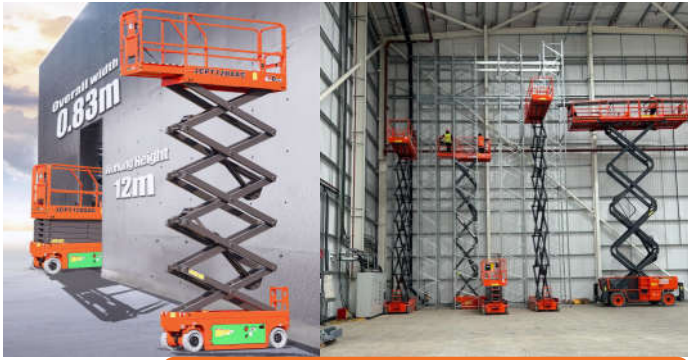
APPLICATIONS in Industries and Sectors



OPERATIONAL NETWORK



DINGLI AERIAL WORK PLATFORMS



SCISSOR LIFTS

Electric	
Working height:	6m - 32m
Lift capacity:	230kg - 750kg
Diesel Engine	
Working height:	12m - 22m
Lift capacity:	363kg - 750kg
Oil Free - 100% electric	
Working height:	5m - 8m
Lift capacity:	230kg - 240kg



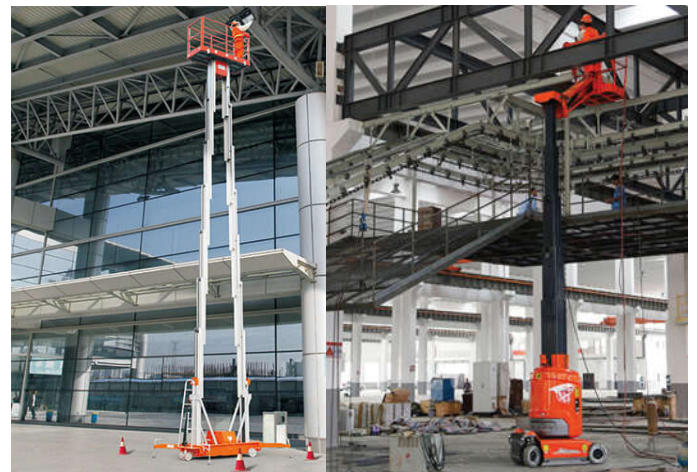
TELESCOPIC BOOM LIFTS

Electric	
Working height:	22m - 30m
Lift capacity:	454kg
Deisel Engine	
Working height:	22m - 30m
Lift capacity:	454kg



ARTICULATING BOOM LIFTS

Electric	
Working height:	16 m - 28m
Lift capacity:	230kg - 300kg
Deisel Engine:	
Working height:	16m - 28m
Lift capacity:	230kg - 300kg



VERTICAL LIFTS

Working height:	6.7m - 14m
Lift capacity:	136kg - 300kg



Lift capacity:	15.6m - 20.3m
Lift capacity:	400kg - 1800kg



OIL FREE

Working height:	5m - 16m
Lift capacity:	230kg - 240kg

SPIDER LIFTS

SPIDER LIFTS

Spider lifts are a special type of aerial work platform equipped with a rubber track system. The 4-legged spider stabilizer system combined with a compact design allows the machine to operate in tight, hard-to-reach spaces. The lifting height ranges from 12m to 50m, with a maximum load capacity of up to 400kg.



SLOPES & STAIRS



EXACT MANOEUVERING



STABILISATION & LEVELLING



LOW SPACE REQUIREMENTS



PRECISE BASKET POSITIONING

KAESER AIR COMPRESSORS

Kaeser air compressors come from Germany, featuring world-leading compression technology. The products are widely supplied across many countries and primarily serve industries such as manufacturing, healthcare, vehicle maintenance, and more.



FORKLIFTS

FORKLIFTS

MLC's forklifts have a designed load capacity ranging from 1.5 to 15 tons, including electric and diesel engine models. Our forklifts feature well-known brands from Japan and Europe such as Toyota, Manitou, Mitsubishi...



TELEHANDLERS

Telehandlers feature a telescopic boom system that supports flexible lifting and lowering operations in various positions. There are two main types: fixed frame and rotating frame. With various attachments such as forks, buckets, jib booms, etc., they can be quickly adapted to perform multiple functions.



Some Attachments and Optional Functions

FACTORY EQUIPMENT



Industrial Drying Fan



Pallet Lifting/Pulling System



Pallet Strapping Machine



FACTORY EQUIPMENT



Warehouse Lifting Equipment



Factory Air Conditioner



Factory Cleaning Robots

RENTAL EQUIPMENT

AERIAL WORK PLATFORMS

SCISSOR LIFTS

- **Electric scissor lift:** Working height: 8m - 14m, lift capacity: 227kg - 454kg.
- **Diesel scissor lift:** Working height: 10m - 18m, lift capacity: 500kg - 565kg.



TELESCOPIC BOOM LIFTS

- **Diesel telescopic boom lift:** Working height: 14m - 58m, Lift capacity: 230kg - 454kg.

ARTICULATING BOOM LIFTS

- **Electric Articulating boom lift:** Working height: 28m, lift capacity: 240kg.
- **Diesel Articulating boom lift:** Working height: 16m - 48m, lift capacity: 227kg - 450kg



MINI CRAWLER LIFT

- Working height: 6m
- Lift capacity: 200kg



VERTICAL LIFTS

- Working height: 11m
- Lift capacity: 160kg

TOUCAN MAST LIFTS

- Working height: 10m
- Lift capacity: 200kg



The aerial work platform (AWP) line is a specialized lifting equipment that offers convenience, efficiency, and safety for tasks performed at height. Nowadays, aerial lifts are widely used to support construction, maintenance, and installation work across various industries and sectors. They come in a wide range of types and working heights to meet diverse operational needs.

RENTAL EQUIPMENT

CRAWLER CRANES

MLC supplies a wide range of crawler cranes with lifting capacities from 80 tons to 1,600 tons, serving lifting, lowering, and installation operations at various construction sites, seaports, and storage facilities.



MOBILE CRANES

MLC offers a diverse range of rough terrain cranes, all-terrain cranes, and truck-mounted cranes, with lifting capacities ranging from 25 tons to 800 tons, ready to meet the demands of various projects nationwide.



RENTAL EQUIPMENT

SKID LOADERS

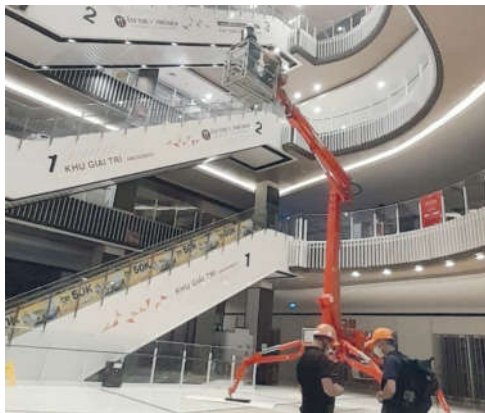


OTHER EQUIPMENT

Other equipment supporting the construction sector and various industrial applications – all sourced from the world's leading brands.



RENTAL EQUIPMENT



RENTAL EQUIPMENT



RENTAL EQUIPMENT



HIGHLIGHTED LOCAL PROJECT



METRO HO CHI MINH 1 (09/2016- Present)

Address: 1 Dist, Ho Chi Minh city.

Investor: MAUR

Customer: Shimizu Maeda

Number of equipments:

+ Cranes: 5 units

+ Boom lifts: 3 units

+ Forklifts: 4 units

+ Others: 13 units



NHAT TAN BRIDGE PROJECT (10/2013-2/2015)

Address: Nhat Tan Bridge, Hanoi

Investor: ACV

Customer: SUMITOMO MITSUI CONSTRUCTION

Number of equipments:

+ Cranes: 2 units

+ Telescopic boom lifts: 11 units

+ Articulating boom lifts: 18 units

+ Scissor lifts: 17 units

+ Others: 16 units



NOI BAI AIRPORT PROJECT (10/2013-1/2015)

Address: T1, T2 Terminal

Investor: ACV

Customer: LILAMA 69-1, LILAMA10, TAISEI

Number of equipments:

+ Telescopic boom lifts: 23 units

+ Articulating boom lifts: 17 units

+ Scissor lifts: 45 units

+ Others: 7 units

HIGHLIGHTED LOCAL PROJECT



SAM SUNG FACTORY PROJECT (3/2013-2015)

Address: Bac Ninh & Thai Nguyen & Ho Chi Minh

Investor: Samsung Group

Customer: SAEHWA, JEIL, DONGSUNG, ETC

Number of equipments:

+ Cranes: 12 units

+ Boom lifts: 94 units

+ Scissor lifts: 284 units

+ Others: 80 units



NGHI SON 2 THERMAL POWER PLANT (09/2018-Present)

Address: Nghi Son, Thanh Hoa

Investor: Marubeni

Customer: DHIC, Lilama 69, ATAD, CC1

Number of equipments:

+ Cranes: 5 units

+ Boom lifts: 15 units

+ Generators: 3 units

+ Other equipment: 13 units



LOTTE BUILDING PROJECT(10/2013-2/2015)

Address: Dao Tan, Cong Vi Ward, Ba Dinh Dist, Hanoi

Investor: Lotte Group

Customer: Iljin Unisco, Lien Thai Binh.

Number of equipments:

+ Boom lifts : 19 units

+ Scissor lift: 13 units

+ Other Equipment: 7 units

HIGHLIGHTED LOCAL PROJECT



EQUIPMENT SUPPLY FOR SOLAR ENERGY PROJECTS DURING 2020 -2021



HIGHLIGHTED LOCAL PROJECT



EQUIPMENT SUPPLY FOR WIND POWER PROJECTS IN 2020 -2021



FEATURED PROJECTS NATIONWIDE

PHNOM PENH INTERNATIONAL AIRPORT(2021)

Address: Phnom Penh, Campuchia.

Customer: Dai Dung, MIDLAND (Combodia)

Number of equipments:

+ Cranes: 3 units

+ AWP: 7 units

+ Other: 15 units

MATARBARI POWER PLANT

Address: Cox's Bazar, Chittagong, Bangladesh

Investor: Sumitomo Corporation, Toshiba, IHI, EPC.

Number of equipment:

+ Crane: 800 ton

FEATURED PROJECTS NATIONWIDE

CELL II-150MW THERMAL POWER PLANT, SIHANOUKVILLE (2018-2020)

Address: Stung Hav, Sihanoukville,
Cambodia.

Investor: Cambodia Government

Customer: TPSC - Main Contractor

Number of equipments:

- + Cranes: 10 units (to 25 tons - 600 tons)
- + Forklifts: 5 units
- + Others: 20 units

SIEM RIEP FERRIS WHEEL PROJECT (2019-2020)

Address: Siem Reap, Cambodia

Investor: Amenic (Japan)

Customer: Angkor Eye (Main Contractor)

Number of equipment:

- + Crawler cranes: 180 tons x 260 tons
- + Mobile cranes: 220 tons

STRATEGIC PARTNERS

MANUFACTURERS



SUPPLIERS



CONTACT US



MLC INC CO., LTD

Head Office – Hanoi:

17th Floor, Icon4 Building, 243A De La Thanh Street, Lang Thuong Ward, Dong Da District, Hanoi.

Tel: +84 24 3773 3704/3703

Southern Office:

No.15, Street T16, The Manhattan Area, Long Binh Ward, Thu Duc City, Ho Chi Minh City

Tel: +84 286 2807 283

Email: info@mlc-inc.com.vn

Website: www.mlc-inc.com.vn, www.dailyxenangnguoivn.com

www.xenangnguoijlg.vn, www.teupen.com.vn,

www.xecauumac.com, www.thietbinhamay.com.vn

www.maynenkhihaeser.com.vn

YARD LOCATIONS

- * My Hao - Hung Yen
- * Nghi Son - Thanh Hoa
- * Vung Ang - Ha Tinh
- * Hon La - Quang Binh
- * Phu My - Vung Tau
- * Long Thanh - Dong Nai